

Dark Island Residential Cruise Ship



Make your home the Dark Island

CLYDEBUILT[®]
www.clydebuilt.com



“An Island Like No Other”

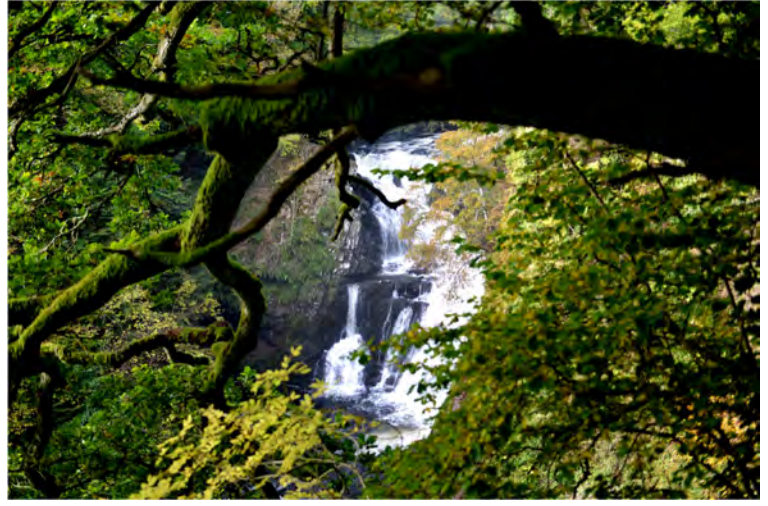
It gives me great pleasure to introduce to you the Dark Island; a residential cruise ship with the ambiance of a luxury hotel, destined to be built by 2026.

There is an excellent choice of 101 suites all with a balcony. Choose from 1, 2 or 3 bedrooms. The suites range from 85.66m² (922.03ft²) to 586.94m² (6,317.76 ft²).

The four top-deck suites feature private access from the lower deck area via your personal twin elevators and twin stairways.

Tommy McGinn

Director



The Dark Island name is drawn from the vast area of the beautiful Outer Hebrides in the Western Isles of Scotland; it exists in the mind as a place of beauty and tranquillity. Inspired by Scottish history and clan heritage, our talented team of designers and artists will integrate the essence of the Highland glens throughout the Dark Island cruise ship interior décor.





The Dark Island's luxurious and superbly appointed accommodation makes the Dark Island a class leader in cruise ships. The high staff to resident ratio and your butler will offer an exceptional level of service to ensure your every requirement is fulfilled. They will help arrange your experiences and activities, oversee all your dining desires, recommend your wines and anticipate your requirements.





All our suites can be designed to your individual preference. Suites are priced according to location on the cruise ship, the view and the floor area. All decks are accessible by stairs and elevators and there are good facilities and access for mobility.



Your home from home.



Glenfinnon one bedroom suites

Your clan suite is designed for maximum luxury and your comfort.

Privacy: Fully soundproof walls, ceiling and floor.

Dining area: Spacious and stylish, with beautiful dining table and chairs.

Lounge area: Relaxing and spacious with soft grain leather sofa, armchairs and footstool.

Kitchen area: Kitchen and breakfast bar.

Rest: Bedrooms feature craftsman built wardrobes, mahogany side tables, mahogany dressing table and ample built in storage areas. Your mahogany framed bed has Egyptian cotton sheets, downy pillows and a cotton duvet.

Relaxation: Writing bureau, work/art/hobby table.

Security: The suite has personal security measures in place, smoke and fire detection systems and a built in safe.

Comfort and safety: The suite has fully filtered-air climate control.

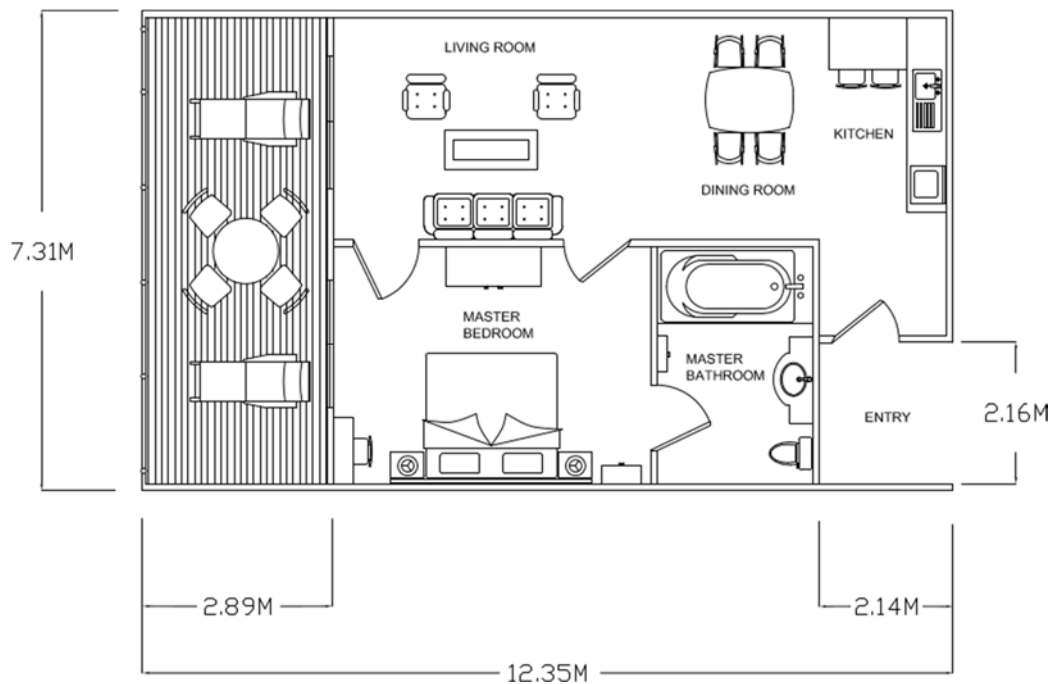
Bathroom suite: The marble bathroom suite walls surround a large bath and large shower cubicle. Under floor heating, heated towel rails and custom toiletries provide luxury living.

Balcony: Spacious with teak wood floor finish, with comfortable sun loungers, table and chairs.

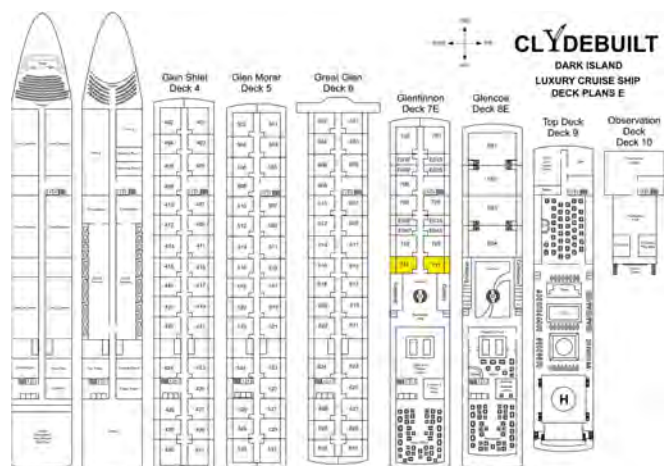
Entertainment: High definition SMART TV, Satellite and internet are provided for your enjoyment.

Customise your suite: Select from a range of designer furniture and fixtures and configure them to give your suite a personal touch, to your style and colour scheme.

Expand: If you wish more space and privacy, you can purchase the adjacent suite and we will join through with a door or archway.

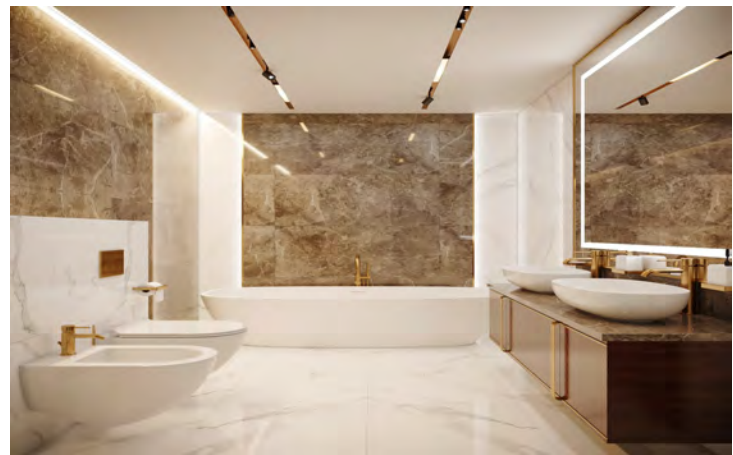


SUITE DETAILS	
Living Area	64.53mt ² 694.59ft ²
Balcony Area	21.13mt ² 227.44ft ²
Total Area	85.66mt ² 922.03ft ²
SUITE COSTS	
Suite	POA
Annual Fee	POA





Where will we go today?



Glenshiel, Glen Morar, Great Glen and Glenfinnon

one or two bedroom suites

Your clan suite is designed for maximum luxury and your comfort.

Privacy: Fully soundproof walls, ceiling and floor.

Dining area: Spacious and stylish, with beautiful dining table and chairs.

Lounge area: Relaxing and spacious with soft grain leather sofa, armchairs and footstool.

Kitchen area: Kitchen and breakfast bar.

Rest: Bedrooms feature craftsman built wardrobes, mahogany side tables, mahogany dressing table and ample built in storage areas. Your mahogany framed bed has Egyptian cotton sheets, downy pillows and a cotton duvet.

Relaxation: Writing bureau, work/art/hobby table.

Security: The suite has personal security measures in place, smoke and fire detection systems and a built in safe.

Comfort and safety: The suite has fully filtered-air climate control.

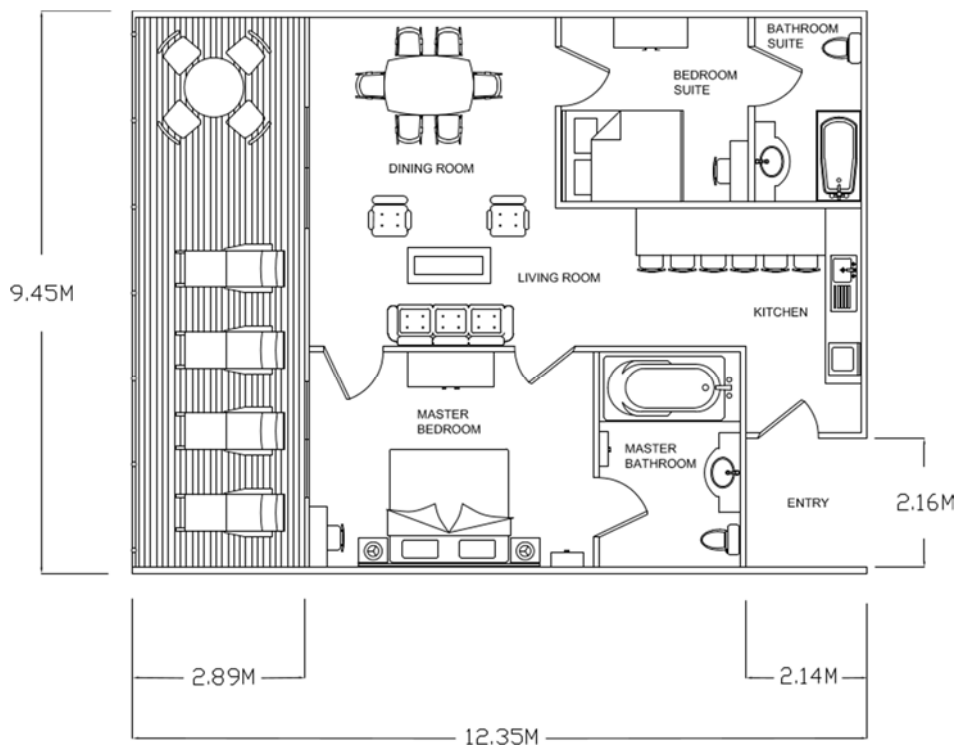
Bathroom suite: The marble bathroom suite walls surround a large bath and large shower cubicle. Under floor heating, heated towel rails and custom toiletries provide luxury living.

Balcony: Spacious with teak wood floor finish, with comfortable sun loungers, table and chairs.

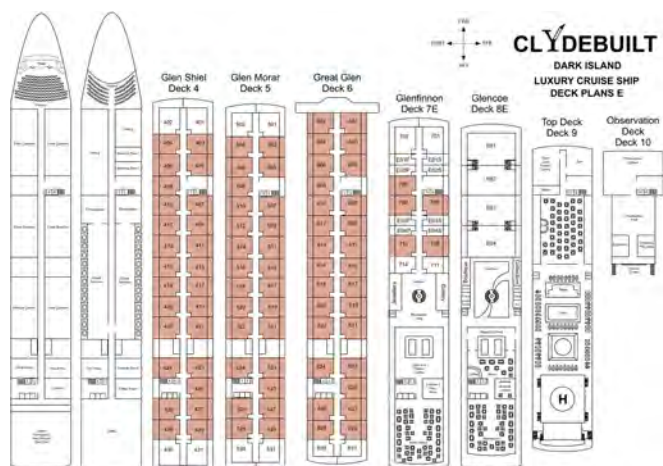
Entertainment: High definition SMART TV, Satellite and internet are provided for your enjoyment.

Customise your suite: Select from a range of designer furniture and fixtures and configure them to give your suite a personal touch, to your style and colour scheme.

Expand: If you wish more space and privacy, you can purchase the adjacent suite and we will join through with a door or archway.

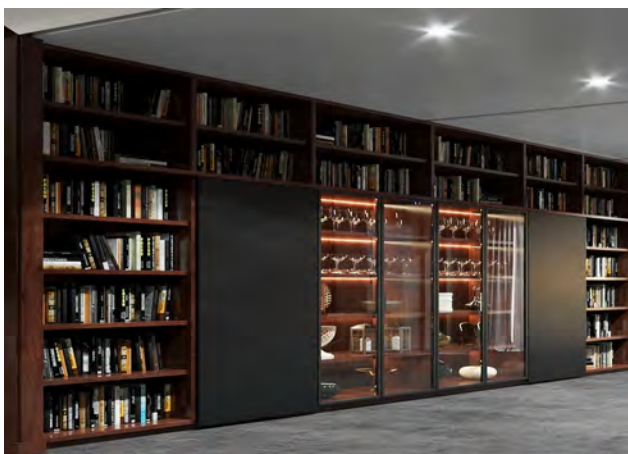


SUITE DETAILS	
Living Area	84.78mt ² 912.56ft ²
Balcony Area	27.31mt ² 293.96ft ²
Total Area	112.09mt ² 1,206.52ft ²
SUITE COSTS	
Suite	POA
Annual Fee	POA





Seeking pleasure in beauty.



Great Glen one bedroom suites

Your clan suite is designed for maximum luxury and your comfort.

Privacy: Fully soundproof walls, ceiling and floor.

Dining area: Spacious and stylish, with beautiful dining table and chairs.

Lounge area: Relaxing and spacious with soft grain leather sofa, armchairs and footstool.

Kitchen area: Kitchen and breakfast bar.

Rest: Bedrooms feature craftsman built wardrobes, mahogany side tables, mahogany dressing table and ample built in storage areas. Your mahogany framed bed has Egyptian cotton sheets, downy pillows and a cotton duvet.

Relaxation: Writing bureau, work/art/hobby table.

Security: The suite has personal security measures in place, smoke and fire detection systems and a built in safe.

Comfort and safety: The suite has fully filtered-air climate control.

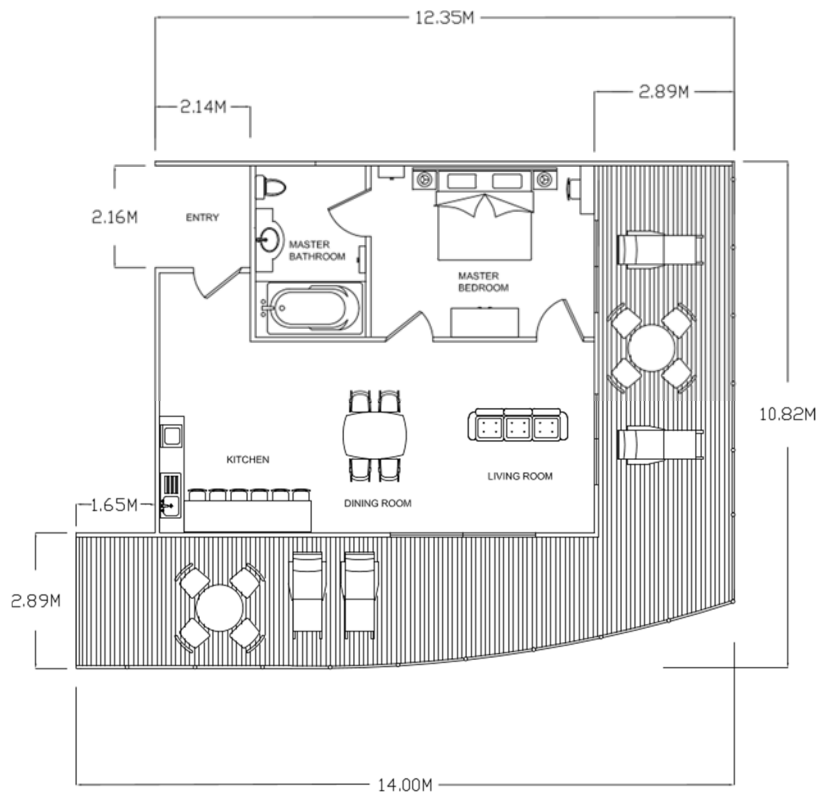
Bathroom suite: The marble bathroom suite walls surround a large bath and large shower cubicle. Under floor heating, heated towel rails and custom toiletries provide luxury living.

Balcony: Spacious with teak wood floor finish, with comfortable sun loungers, table and chairs.

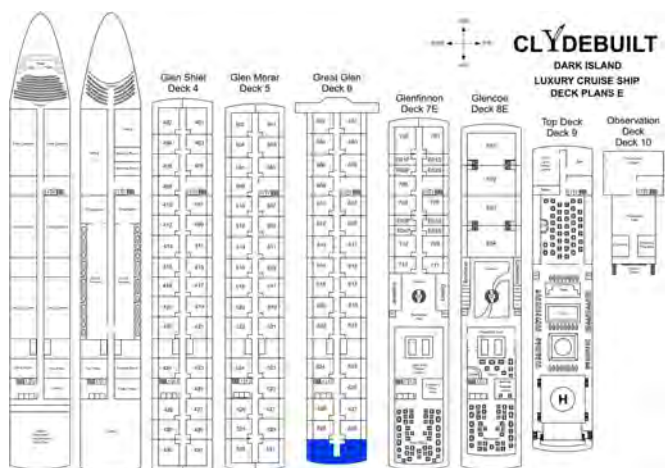
Entertainment: High definition SMART TV, Satellite and internet are provided for your enjoyment.

Customise your suite: Select from a range of designer furniture and fixtures and configure them to give your suite a personal touch, to your style and colour scheme.

Expand: If you wish more space and privacy, you can purchase the adjacent suite and we will join through with a door or archway.

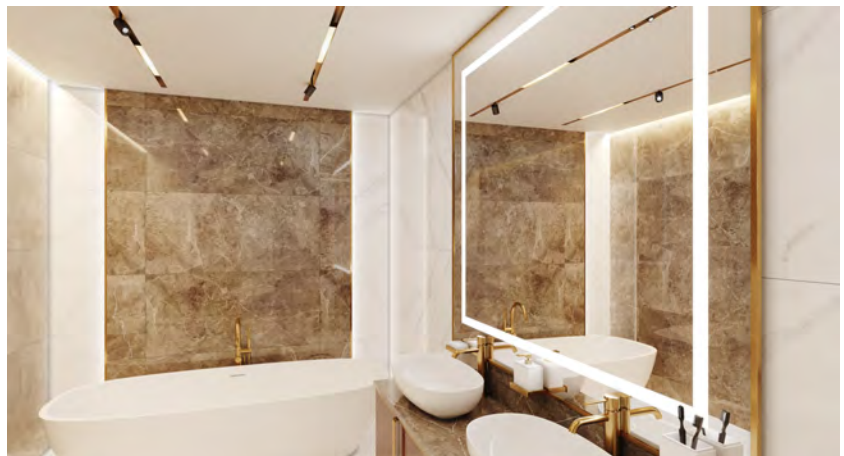


SUITE DETAILS	
Living Area	70.39mt ² 757.67ft ²
Balcony Area	60.02mt ² 646.05ft ²
Total Area	130.41mt ² 1,403.72ft ²
SUITE COSTS	
Suite	POA
Annual Fee	POA





Travel to locations
around the globe.



Glen Morar one or two bedroom suites

Your clan suite is designed for maximum luxury and your comfort.

Privacy: Fully soundproof walls, ceiling and floor.

Dining area: Spacious and stylish, with beautiful dining table and chairs.

Lounge area: Relaxing and spacious with soft grain leather sofa, armchairs and footstool.

Kitchen area: Kitchen and breakfast bar.

Rest: Bedrooms feature craftsman built wardrobes, mahogany side tables, mahogany dressing table and ample built in storage areas. Your mahogany framed bed has Egyptian cotton sheets, downy pillows and a cotton duvet.

Relaxation: Writing bureau, work/art/hobby table.

Security: The suite has personal security measures in place, smoke and fire detection systems and a built in safe.

Comfort and safety: The suite has fully filtered-air climate control.

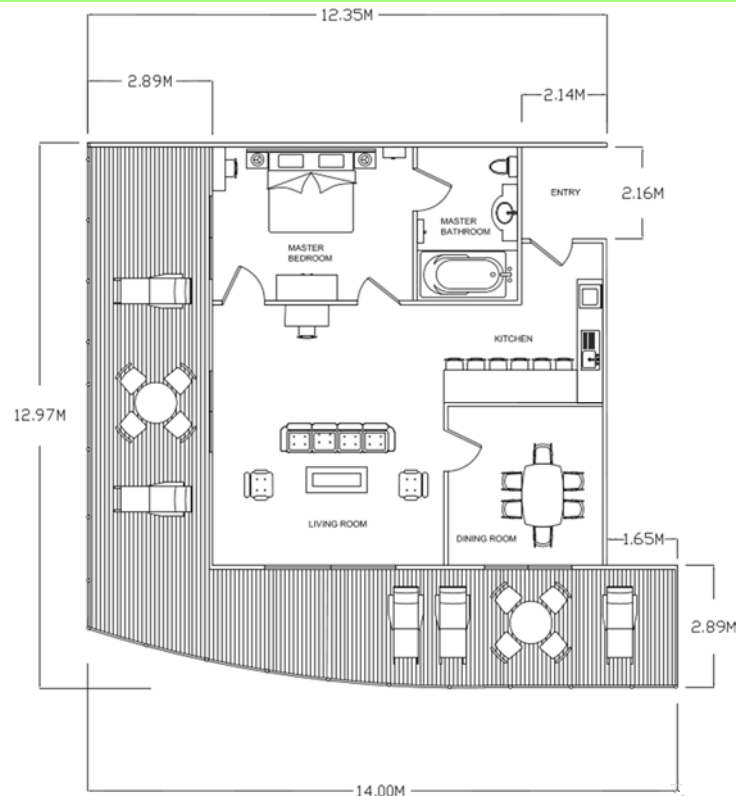
Bathroom suite: The marble bathroom suite walls surround a large bath and large shower cubicle. Under floor heating, heated towel rails and custom toiletries provide luxury living.

Balcony: Spacious with teak wood floor finish, with comfortable sun loungers, table and chairs.

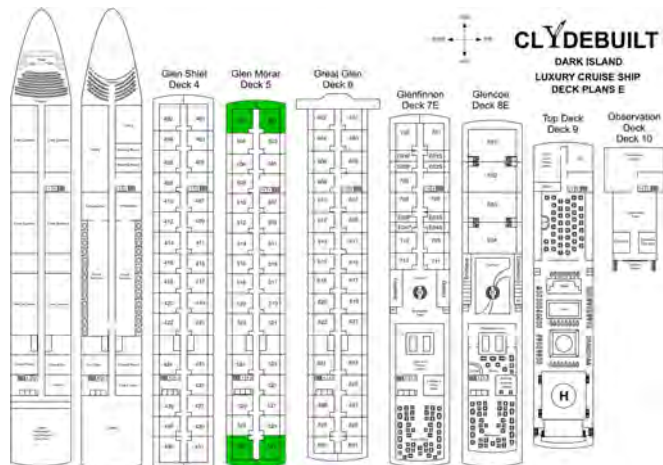
Entertainment: High definition SMART TV, Satellite and internet are provided for your enjoyment.

Customise your suite: Select from a range of designer furniture and fixtures and configure them to give your suite a personal touch, to your style and colour scheme.

Expand: If you wish more space and privacy, you can purchase the adjacent suite and we will join through with a door or archway.



SUITE DETAILS	
Living Area	90.74mt ² 976.71ft ²
Balcony Area	66.22mt ² 712.78ft ²
Total Area	156.96mt ² 1,689.50mt ²
SUITE COSTS	
Suite	POA
Annual Fee	POA





Enjoy and experience different geographic locations and cultures in a sea of opportunity.



Glen Shiel and Glenfinnon one or two bedroom suites

Your clan suite is designed for maximum luxury and your comfort.

Privacy: Fully soundproof walls, ceiling and floor.

Dining area: Spacious and stylish, with beautiful dining table and chairs.

Lounge area: Relaxing and spacious with soft grain leather sofa, armchairs and footstool.

Kitchen area: Kitchen and breakfast bar.

Rest: Bedrooms feature craftsman built wardrobes, mahogany side tables, mahogany dressing table and ample built in storage areas. Your mahogany framed bed has Egyptian cotton sheets, downy pillows and a cotton duvet.

Relaxation: Writing bureau, work/art/hobby table.

Security: The suite has personal security measures in place, smoke and fire detection systems and a built in safe.

Comfort and safety: The suite has fully filtered-air climate control.

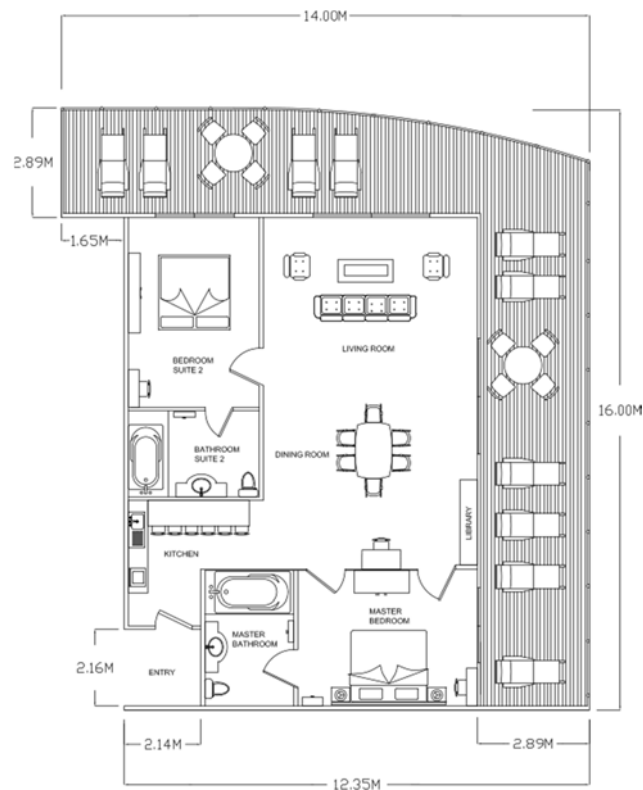
Bathroom suite: The marble bathroom suite walls surround a large bath and large shower cubicle. Under floor heating, heated towel rails and custom toiletries provide luxury living.

Balcony: Spacious with teak wood floor finish, with comfortable sun loungers, table and chairs.

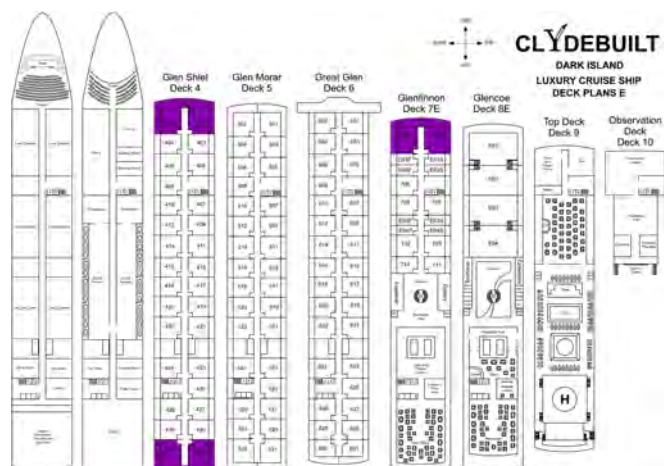
Entertainment: High definition SMART TV, Satellite and internet are provided for your enjoyment.

Customise your suite: Select from a range of designer furniture and fixtures and configure them to give your suite a personal touch, to your style and colour scheme.

Expand: If you wish more space and privacy, you can purchase the adjacent suite and we will join through with a door or archway.



SUITE DETAILS	
Living Area	119.40mt ² 1,285.21ft ²
Balcony Area	74.98mt ² 807.07ft ²
Total Area	194.38mt ² , 2,092.28ft ²
SUITE COSTS	
Suite	POA
Annual Fee	POA





Dream of a faraway journey
through the lands of the world.



Glencoe two or three bedroom suites

Your clan suite is designed for maximum luxury and your comfort.

Privacy: Fully soundproof walls, ceiling and floor.

Dining area: Spacious and stylish, with beautiful dining table and chairs.

Lounge area: Relaxing and spacious with soft grain leather sofa, armchairs and footstool.

Kitchen area: Kitchen and breakfast bar.

Rest: Bedrooms feature craftsman built wardrobes, mahogany side tables, mahogany dressing table and ample built in storage areas. Your mahogany framed bed has Egyptian cotton sheets, downy pillows and a cotton duvet.

Relaxation: Writing bureau, work/art/hobby table.

Security: The suite has personal security measures in place, smoke and fire detection systems and a built in safe.

Comfort and safety: The suite has fully filtered-air climate control.

Bathroom suite: The marble bathroom suite walls surround a large bath and large shower cubicle. Under floor heating, heated towel rails and custom toiletries provide luxury living.

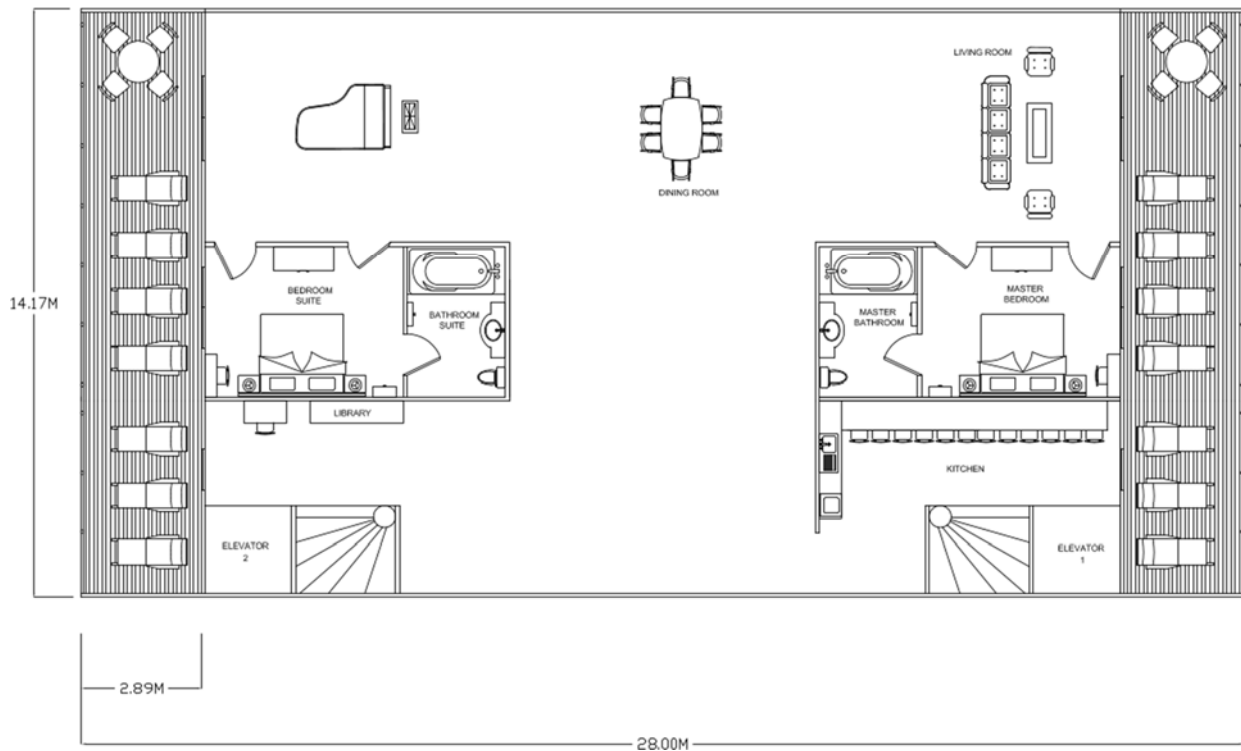
Balcony: Spacious with teak wood floor finish, with comfortable sun loungers, table and chairs.

Entertainment: High definition SMART TV, Satellite and internet are provided for your enjoyment.

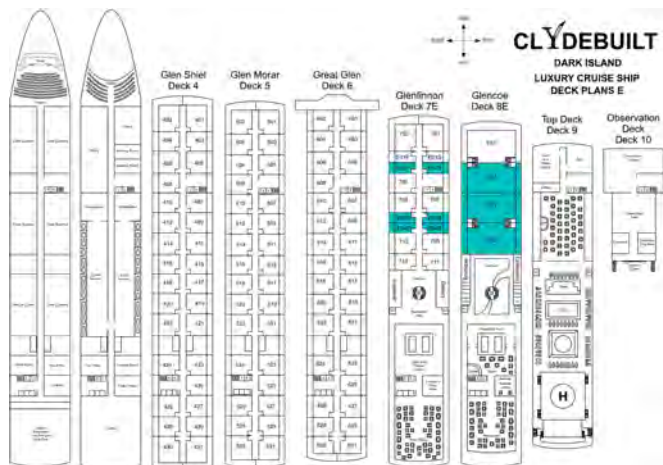
Customise your suite: Select from a range of designer furniture and fixtures and configure them to give your suite a personal touch, to your style and colour scheme.

Expand: If you wish more space and privacy, you can purchase the adjacent suite and we will join through with a door or archway.

Suite access: Twin private stairways and elevators.



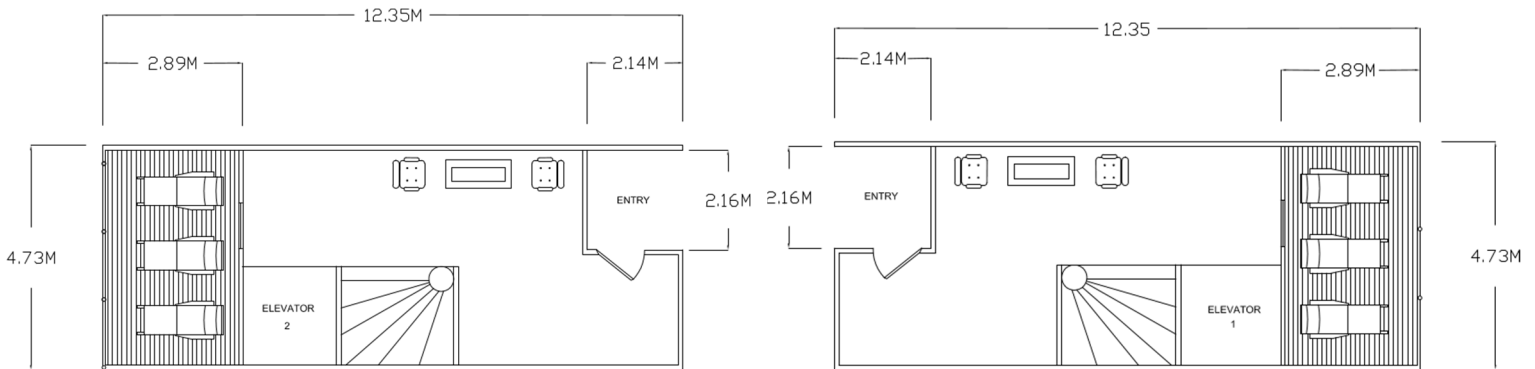
SUITE DETAILS	
Living Area Deck 8E	314.86m ² 3,389.12ft ²
Balcony Area Deck 8E	81.90m ² 881,56ft ²
Total Area Deck 8E	396.76m ² 4,270.68ft ²





Suite access: Twin private stairways and elevators.





SUITE DETAILS Deck 7E PORT

Living Area Deck 7E	40.13mt ² 431.95ft ²
Balcony Area Deck 7E	13.60mt ² 146.38ft ²
Total Area Deck 7E	53.73mt ² 578,33ft ²

SUITE DETAILS Deck 7E STARBOARD

Living Area Deck 7E	40.13mt ² 431.95ft ²
Balcony Area Deck 7E	13.60mt ² 146.38ft ²
Total Area Deck 7E	53.73mt ² 578,33ft ²

SUITE DETAILS	
Suite Deck 8E	396.76mt ² 4,270.68ft ²
Suite Port Deck 7E	53.73mt ² 578.34ft ²
Suite Starboard Deck 7E	53.73mt ² 578.34ft ²
Total Area	504.22mt ² 5,427.37ft ²
SUITE COSTS	
Suite living	POA
Annual Fee balcony	POA



The ultimate experience
living at sea.



Glencoe two or three bedroom suites

Your clan suite is designed for maximum luxury and your comfort.

Privacy: Fully soundproof walls, ceiling and floor.

Dining area: Spacious and stylish, with beautiful dining table and chairs.

Lounge area: Relaxing and spacious with soft grain leather sofa, armchairs and footstool.

Kitchen area: Kitchen and breakfast bar.

Rest: Bedrooms feature craftsman built wardrobes, mahogany side tables, mahogany dressing table and ample built in storage areas. Your mahogany framed bed has Egyptian cotton sheets, downy pillows and a cotton duvet.

Relaxation: Writing bureau, work/art/hobby table.

Security: The suite has personal security measures in place, smoke and fire detection systems and a built in safe.

Comfort and safety: The suite has fully filtered-air climate control.

Bathroom suite: The marble bathroom suite walls surround a large bath and large shower cubicle. Under floor heating, heated towel rails and custom toiletries provide luxury living.

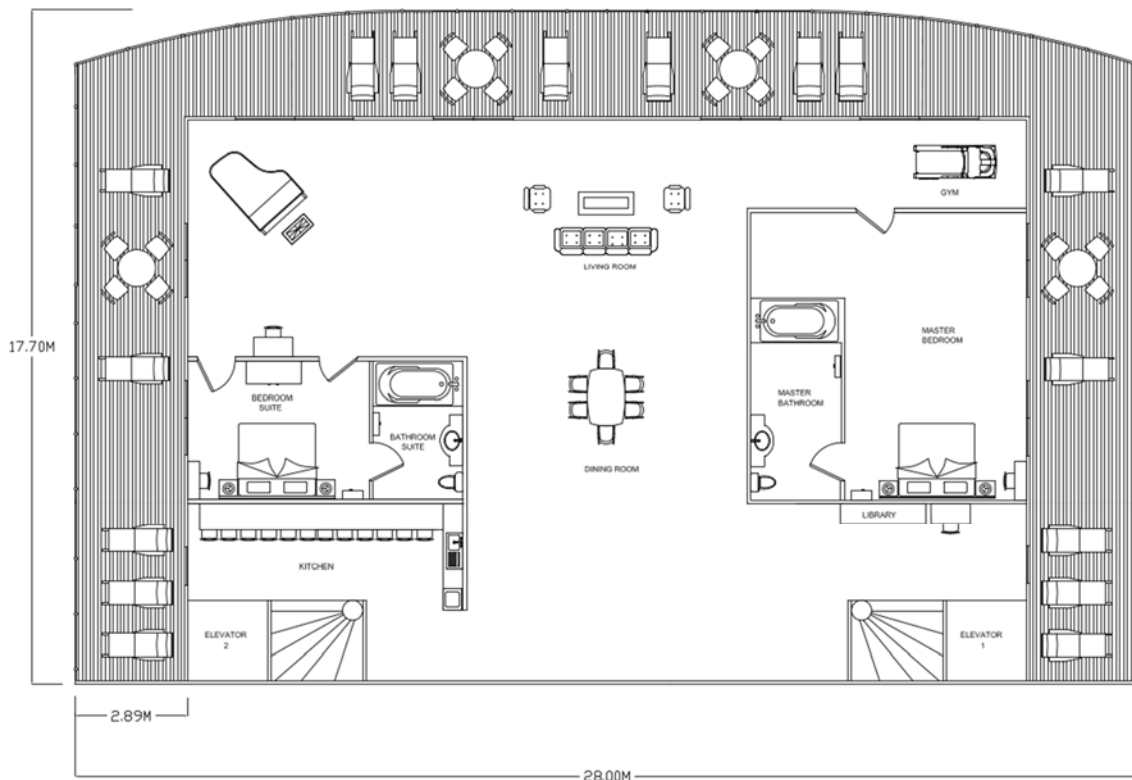
Balcony: Spacious with teak wood floor finish, with comfortable sun loungers, table and chairs.

Entertainment: High definition SMART TV, Satellite and internet are provided for your enjoyment.

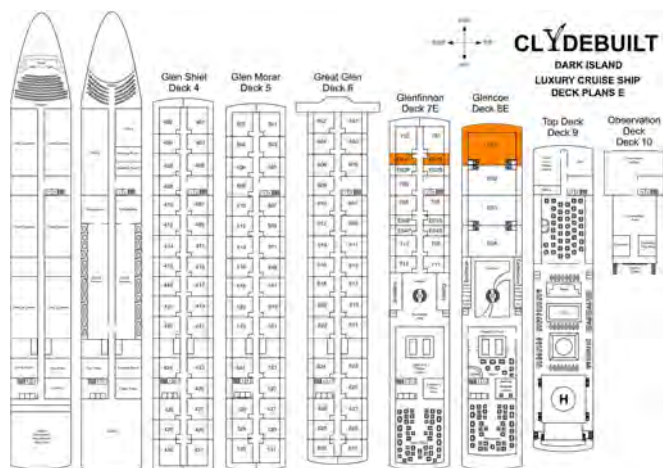
Customise your suite: Select from a range of designer furniture and fixtures and configure them to give your suite a personal touch, to your style and colour scheme.

Expand: If you wish more space and privacy, you can purchase the adjacent suite and we will join through with a door or archway.

Suite access: Twin private stairways and elevators.



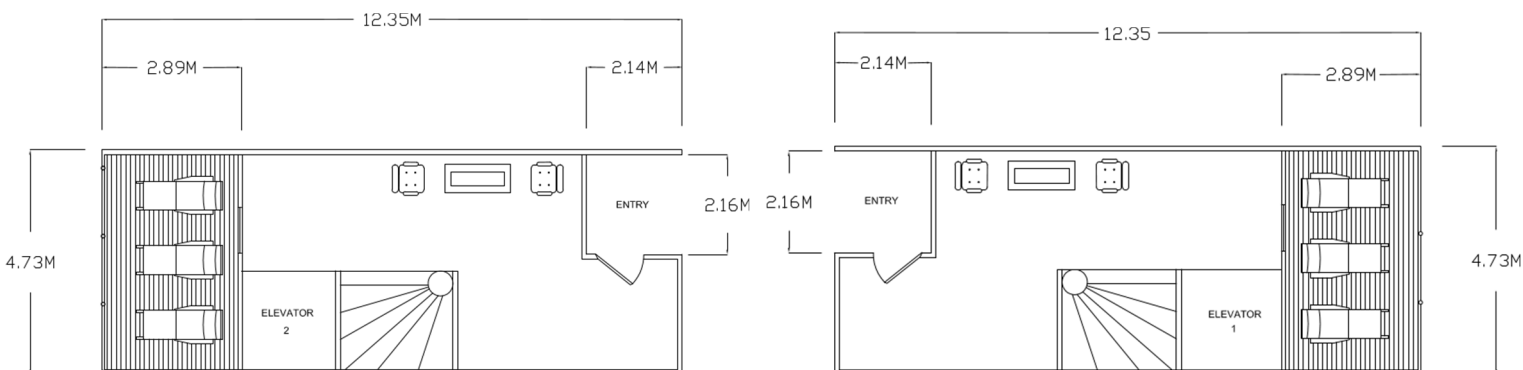
SUITE DETAILS	
Living Area Deck 8E	329.08m ² 3,542.18ft ²
Balcony Area Deck 8E	150.40m ² 1,618.89ft ²
Total Area Deck 8E	479.48m ² 5,161.07ft ²





Suite access: Twin private stairways and elevators.





SUITE DETAILS Deck 7E PORT

Living Area Deck 7E	40.13mt ² 431.95ft ²
Balcony Area Deck 7E	13.60mt ² 146.38ft ²
Total Area Deck 7E	53.73mt ² 578,33ft ²

SUITE DETAILS Deck 7E STARBOARD

Living Area Deck 7E	40.13mt ² 431.95ft ²
Balcony Area Deck 7E	13.60mt ² 146.38ft ²
Total Area Deck 7E	53.73mt ² 578,33ft ²

SUITE DETAILS

Suite Deck 8E	479.48mt ² 5,161.07ft ²
Suite Port Deck 7E	53.73mt ² 578.34ft ²
Suite Starboard Deck 7E	53.73mt ² 578.34ft ²
Total Area	586.94mt ² 6,317.76ft ²

SUITE COSTS

Suite living	POA
Annual Fee balcony	POA



The Dark Island features enriching activities that reflect the residents' wide scope of interests. Get involved in our art classes, culinary classes, photography classes, Pilates classes or reading in a well stocked library.



On board there is entertainment such as musical productions, vocalists, guest lecturers and pianists. Enjoy performers, musicals, singing and dancing from around the world in our theatre, as well as our own on-board production shows.



Experience all inclusive dining.

Enjoy the authenticity of the cuisine and culinary experience at any of the ship's three exquisite dining locations.

The Glen restaurant – Discover the flavour of fine food, all prepared with the finest ingredients. Dine on exotic flavours from around the world during featured themed meals on designated evenings.

The Clan restaurant – An ideal venue for breakfast, informal lunch and dinner. Tea, coffee, buffet and snacks are available throughout the day.

The Highland grill – Relax near the pool and spa for informal dining with shaded seating areas. Select from grilled steak, fish, chicken, burgers, sandwiches and vegetarian options

Suite service – Enjoy pleasant suite service offering a fantastic range of hot and cold food.



Enjoy experience at sea. Visit and explore places that are otherwise difficult to reach using fast boats.





Organised by Dark Island, visit amazing sights and prestige events around the globe.

Health and wellbeing, local and sustainably sourced produce, safety, procurement, supply chain and responsible consumption are at the core of our values.





Land excursions and adventures take place around the world. The adventures vary in location and length of stay and you are always accompanied by our experienced guides.

Land excursions also include hill, coast, forest and glen hikes around the countries of the world. Enjoy visits to Grand Prix racing, international tournaments, and Olympic games.

Golf is one of the most popular outdoor sporting activities in the world and there are many historical and iconic courses, our concierge team will be happy to arrange your golfing requirements.

Relax in the Highland Glen Spa or in the comfort of your suite and choose from our range of treatments or enjoy a pedicure and manicure in the salon. The hydrotherapy pool, with its warm bubbling water, will leave you feeling energised.

Our state-of-the-art fitness and wellbeing centre features exercise, training courses, treadmills and weights, all with an ocean view.



Our team, from administration to cabin crew, reflect our positive environmental promotion ethos.

We encourage the reduction and recycling of waste and conservation of energy and water is promoted throughout the ship.

Our air-condition systems are automated for optimum use around the ship, along with automated energy-efficient LED lighting systems.

In addition, we encourage those on board, guests and crew, to reuse items such as bath towels, to further conserve energy and water.



Purchase

Please note the suite drawing number you have in mind; our sales consultants will be delighted to discuss the suite with you. If you prefer a larger suite layout then note the entire suite drawing numbers that you are interested in and discuss with our sales consultants.

Clydebuilt will work to bring suite owners together in a combined ownership structure; this is an ideal solution for clients who want to live at sea all year round and for clients wanting to experience a home from home for periods throughout the year. Shared ownership was introduced to offer a high-value alternative to outright ownership of expensive capital goods. It works by enabling suite owners to share the acquisition and running costs of the cruise ship.

Your privacy is very important to us. As a prospective client any interest and information we receive from you is fully confidential and will not be divulged in any way.



The cruise ship itinerary is set in advance by a suite owners vote and the Captain. The Captain will have final say due to any health and safety issues that may arise to the planned destinations.

As well as exploring on shore at all our destinations, you may disembark and embark at any planned stops. Shore adventures and excursions are included in the service fee. You can of course plan your own exploration.

You do not have to live on board full time. If you wish, family and friends can use your suite in your absence. You can leave and return to the ship as arranged anywhere in the world should you choose to do so. Please contact us now to discuss your requirements.

CLYDEBUILT[®]
www.clydebuilt.com

The figures, illustrations and information in this brochure are subject to change and for sales promotion purpose only, they do not represent any contract or offer between the parties. You should obtain your own independent financial and legal advice before making any decisions.



Make your home the DARK ISLAND

Clydebuilt Ltd
Mosshill Business Park
Ayr KA6 6BE
+44 (0) 7517 322600
sales@clydebuilt.com
www.clydebuilt.com

CLYDEBUILT[®]
www.clydebuilt.com